

# POLAR 2 RGB NEON



## Polar 2 RGB Neon

- 120° beam angle provides a strong line of light
- Opaque PVC jacket with a white PVC backing
- Parallel wiring to each LED ensures that if one LED goes out, the rest of the cutting increment stays lit
- 3-in-1 5050 SMD LEDs with 1/2" spacing
- Clips, clear plastic track, or aluminum channel available for a variety of mounting purposes including coves and ledges

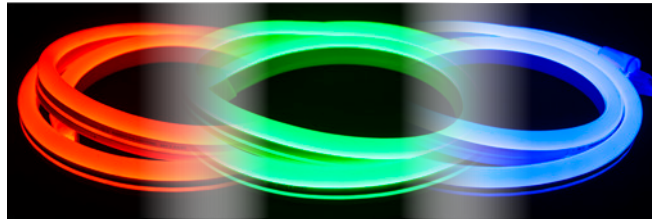
## Specifications:

Series	RGB-NF
Input voltage	24V DC
Colors	RGB
Wattage	2.7W/ft
Reel length	65ft
Dimensions	5/8"W x 1-1/8"H
Maximum run	44ft (24V)
Cuttability	12"
Dimming	10-100% with controller*
Rating	cETLus, Indoor/outdoor
Rated life	30,000 hours

\*Requires RGB Controller (see page 69). Per the NEC, switched wall outlets cannot be used with wall dimmers.

†cETLus Listing for 24V is valid for lengths cut to 65 feet or less

# POLAR 2 RGB NEON



65ft reel • RGB LEDs • Opaque White Jacket  
**RGB-NF-24V-65** (24V)

65ft Polar 2 Neon RGB Reels include (1) attached factory-molded 5ft power cord (without plug, without inverter) and cap on dead end

## POLAR 2 RGB NEON ACCESSORIES



**RGB-NF-CONKIT-NP**  
24V power connection kit  
Includes: (1) 5ft power cord (without plug, without inverter), (1) power pin, (1) end cap and (2) 4" sections of shrink tube



**RGB-NF-JUMP.5** 6"  
**RGB-NF-JUMP3** 3ft  
**RGB-NF-JUMP10** 10ft  
**RGB-NF-JUMP20** 20ft  
Jumper (linking) cable  
Includes: (2) pin connectors and (2) 4" sections of shrink tube



**RGB-NF-INVS**  
Invisible Splice Kit  
Includes: (1) splice pin and (1) 3" sections of shrink tube (Bag of 10)



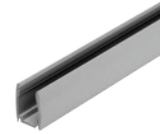
**P2-NF-ENDS**  
Clear plastic end caps  
(Bag of 10)



**P2-NF-CLIPS**  
2" Aluminum mounting clips with mounting screws  
(Bag of 10)



**P2-NF-TRACK-3**  
3ft plastic mounting track  
23/32"w x 13/32"h



**P2-NF-CHAN-3**  
3ft aluminum mounting track  
23/32"w x 13/32"h



**RF-RGBW-3Z**  
RGB Touch Wall Control  
(3 zones / 10 presets)  
(Wireless / RF)



**RF-RGBW-USB**  
RGB (8 zone)  
Remote Control  
(Wireless / RF)



**RF-RGBW-3AAA**  
RGB (8 zone)  
Remote Control  
(Wireless / RF)



**REC-5A-4Z-WiFi**  
RF / WiFi Receiver  
(24V DC input)



**REC-5A-4Z**  
RF Receiver  
(24V DC input)



**LED-DR30-24** (30W)  
24V Driver  
cURus (dry)



**LED-DR60-24** (60W)  
**LED-DR-100-24** (100W)  
**LED-DR-150-24** (150W)  
24V Drivers  
cURus (wet)

For more sophisticated color control using DMX control options or for multiple zone control using the Trulux app, please contact American Lighting directly