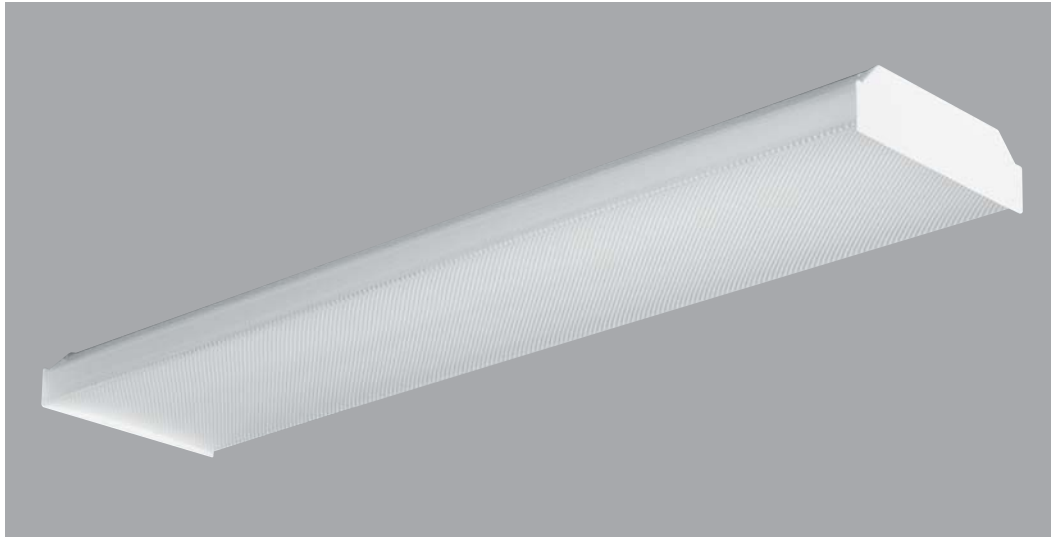
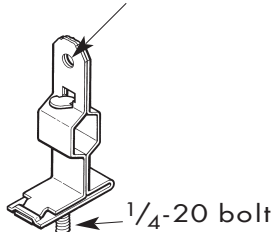


## Installation Instructions

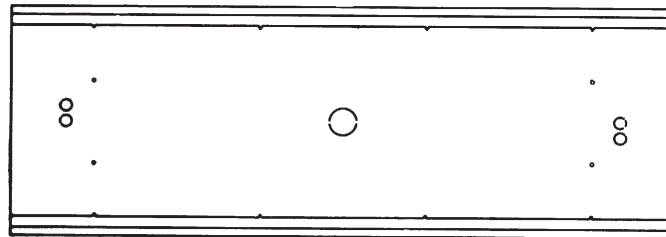
### Wrap Around fixture to T-bar ceiling



Hole for wire to  
attach to rigid  
ceiling member



GAT fastener – FBO



Back view of a typical wrap around fixture –  
2" center K.O. and 7/8" K.O.'s

- 1 Each Williams wrap around fixture has a center 2" K.O. and 7/8" K.O.'s
- 2 Attach (2) GAT fasteners to the T-bar grid, ensuring they are attached to the "main-T". If the "main-T" is not accessible, make certain the GAT fastener is attached to a rigid member above the ceiling
- 3 Depending on the placement of the fixture, it may be necessary to drill holes in the back-side of the fixture to match up to the GAT fasteners
- 4 Once the GAT fasteners are lined up with the holes or KO's in the fixture, lift the fixture to the ceiling above. The 1/4-20 bolts of the fastener should be sticking through the holes or KO's. Tighten the nuts to the bolts
- 5 Power can be supplied to the fixture using a 7/8" K.O. on the fixture's back – and bringing a piece of "flex" and connector into the fixture – simply plug the connector through the 7/8" K.O. and make electrical connections in the fixture. The 2" center K.O. can be used when an outlet box is directly above the fixture K.O.

#### Applicable Fixture Series

Series 17, 18, 20, 21, 22, 23, 24  
31, 32, 35, 36, 37, 38, EW, WEW,  
V5, V8, V12



A Visible Difference