



Features

- 2700K-6000K Tunable CCT pucks
- High color rendering (90+ CRI)
- 24V DC operation with linkable hub system
- Available in three puck kits or single pucks
- Recessed or surface mount design
- Low profile housing - less than 3/4" high
- Single pucks feature Lume I FX technology (for Trulux Tunable CCT control)

CCT Range



2700K-6000K
Tunable CCT

Available Finishes



White



Nickel



Black

Control Options

- Trulux Tunable CCT Controls
 - LED-DR Driver + Trulux Receiver
- Tunable Omni 3 Puck Kit
 - Includes 24V Power Supply + Receiver + Remote

Listing / Ratings



ROHS COMPLIANT

Tunable Omni Puck - 24V

Durable, high CRI Tunable Omni puck lights are available in round or square with three finish options. Single pucks feature 2700K-6000K Lume I FX technology so they can install and coordinate with EdgeLink flat panels. Kits are sold as Round White only and include three OMNI-TW-WH pucks with 72" lead wires and hub connector plugs, (1) 24V DC plug-in driver with attached decoder and 3-port hub, plus a Tunable CCT remote control.

Technical Information

Series	OMNI-TW
Input Voltage	24V DC
CCT	2700K-6000K Tunable CCT
CRI	90+
Wattage	2.8W per puck (round) / 3W per puck (square)
Lumens	Up to 135Lm (round) / Up to 150Lm (square)
Beam Angle	120°
Max Run	Depends on driver used
Dimmable	5-100% (requires Trulux Tunable CCT Control)
Mounting	Surface or recessed (2-1/4" cut-out)
Rating	Dry location; 3-Puck Kits are cETLus Listed
Rated Life	30,000 hrs

Tunable Omni Pucks



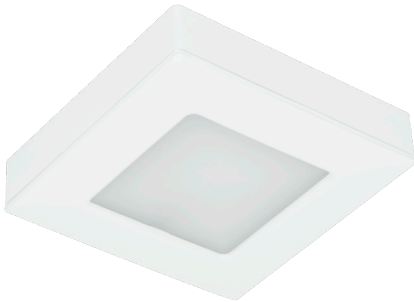
Tunable Omni Round - White
2.8W / 135Lm
OMNI-TW-R1-WH



Tunable Omni Round - Nickel
2.8W / 130Lm
OMNI-TW-R1-NK



Tunable Omni Round - Black
2.8W / 126Lm
OMNI-TW-R1-BK



Tunable Omni Square - White
3W / 150Lm
OMNI-TW-S1-WH



Tunable Omni Square - Nickel
3W / 145Lm
OMNI-TW-S1-NK



Tunable Omni Square - Black
3W / 140Lm
OMNI-TW-S1-BK

Tunable Omni Single Pucks Include: (1) Omni tunable puck with 72" lead wire / Mounting hardware

Tunable Omni Kits



Tunable Omni Three Puck Kit - White
OMNI-TW-R3-WH



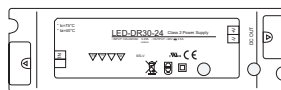
Tunable Omni Three Puck Kits Include: (1) 24V DC plug-in driver/ (1) receiver with 3-port hub and remote control / (3) White Omni Tunable Pucks with 72" lead wires / Mounting hardware

Trulux Controller Set-up



Push Dial Controller
(Single zone)

+



LED-DR 24V Driver
(30W, 60W, 100W, 150W)

+



Trulux RF Receiver
(Required)

+



Omni Tunable Puck