



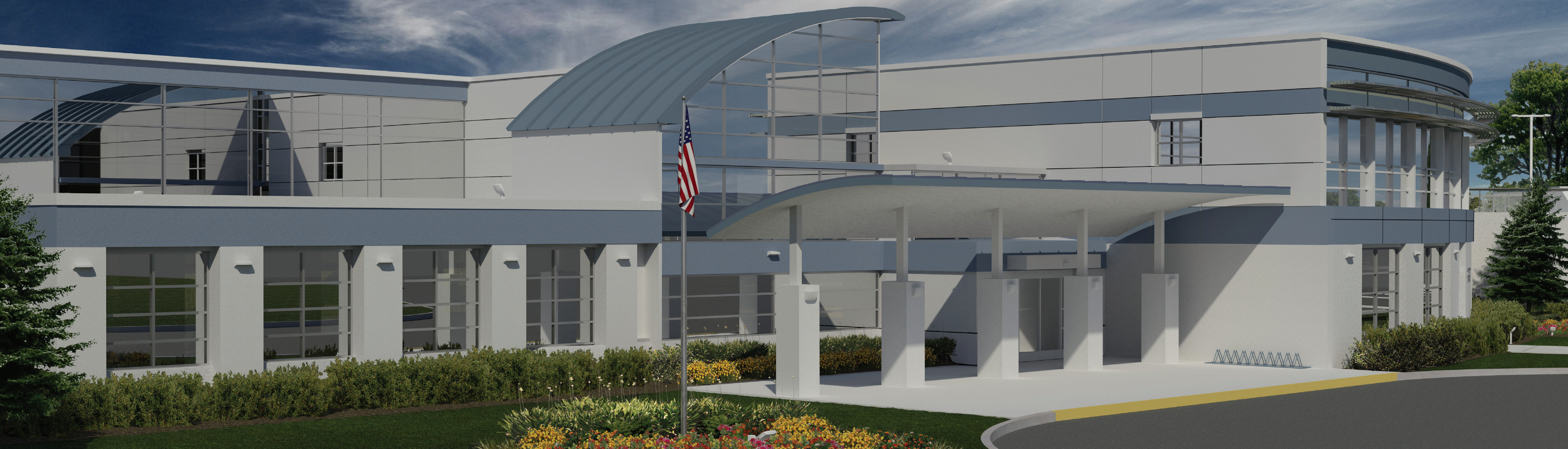
**VOLTAIRE**<sup>®</sup>

Williams Outdoor LED



VW Series Architectural Wall Pack | Prepare to be enlightened.<sup>®</sup>

# VWM & VWP SERIES



## “The best is the enemy of the good.” – Voltaire

Sometimes, being good just isn't enough. That's our philosophy at Williams. Built on a solid reputation for quality manufacturing of high performance luminaires, the new Voltaire wall packs from Williams are no exception.

Aesthetically designed and competitively priced to be the best in their class, the VW series presents architects and specifiers with a viable alternative to the common wall pack. Horizontal or vertical housings in two sizes feature deliberate styling to blend seamlessly with architecture.

Designed to illuminate sidewalks, entryways, perimeters or facades, the Voltaire wall packs from Williams perform equally well in either uplight or downlight applications.

The USA Proud Voltaire Series from H.E. Williams, Inc. – conceptualized, designed, and manufactured with Williams unwavering commitment to quality, in the heart of the USA.



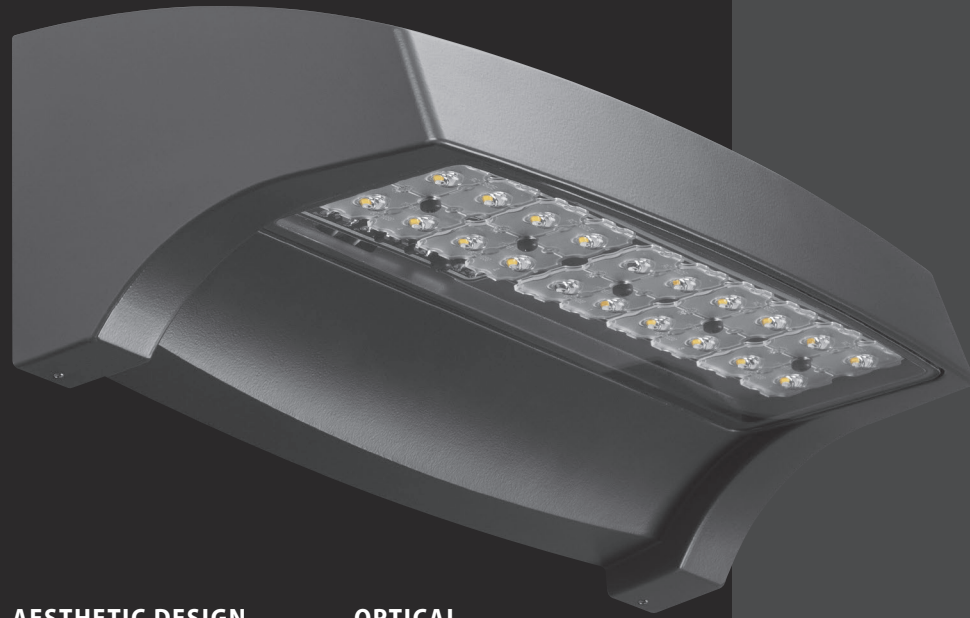
## VWP Series

Voltaire Wall Packs are rugged, reliable, high-performance wall mount fixtures designed to satisfy both the critical eye of the architect, and the practical needs of a contractor. Offering up to 3,200 nominal lumens, three standard IES distributions, integral battery backup option with contoured housing extension, photocell, and diffuse lens options, the VWP Series meets the competitive challenge in both performance and value.

## VWM Series

Voltaire Mini Wall Packs are small, no-frills, highly architectural luminaires that deliver up to 1,700 nominal lumens of general distribution. An attractive, competitive fixture, the VWM Series offers both horizontal and vertical styles for perimeter and security lighting.

# FEATURES & BENEFITS



## AESTHETIC DESIGN

- Aesthetically designed horizontal and vertical housings blend seamlessly with a variety of architectural styles
- Purposefully modeled to allow runoff of dirt and water for an always-clean appearance
- Architectural housing extension for use with or without integral EM option maintains aesthetics throughout an entire project
- Architectural appearance is preserved though concealed heatsink design

## OPTICAL

- Acrylic precision optics (VWP only) produce three standard IES distributions
- Full cutoff, dark-sky compliant optics (downlight only) place light where it's needed with minimal glare
- Optional Solite® diffused lens available

## RUGGED CONSTRUCTION

- Engineered with the highest quality materials to ensure reliability, performance, and quality
- Integral die-cast aluminum heatsink provides optimal passive thermal management

## PERFORMANCE & LIFETIME

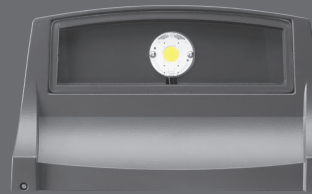
- Achieve energy savings of up to 80% compared to HID systems
- Lumen maintenance (L70) of 54,000 hours
- Delivers 1,100-3,200 nominal lumens
- 80+ lumens per watt
- ANSI 4000K and 5000K CCT, minimum 70 CRI
- DLC qualified products listed at [www.designlights.org](http://www.designlights.org)



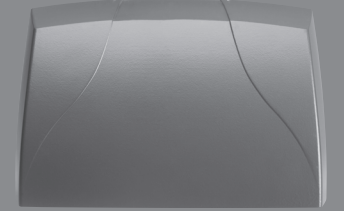
This fixture is proudly made in the USA.



## VWMH – Mini Horizontal Wall Pack



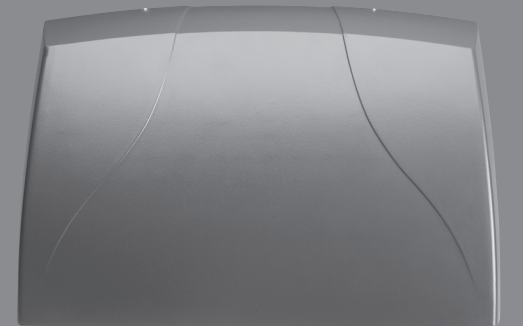
## VWMV – Mini Vertical Wall Pack

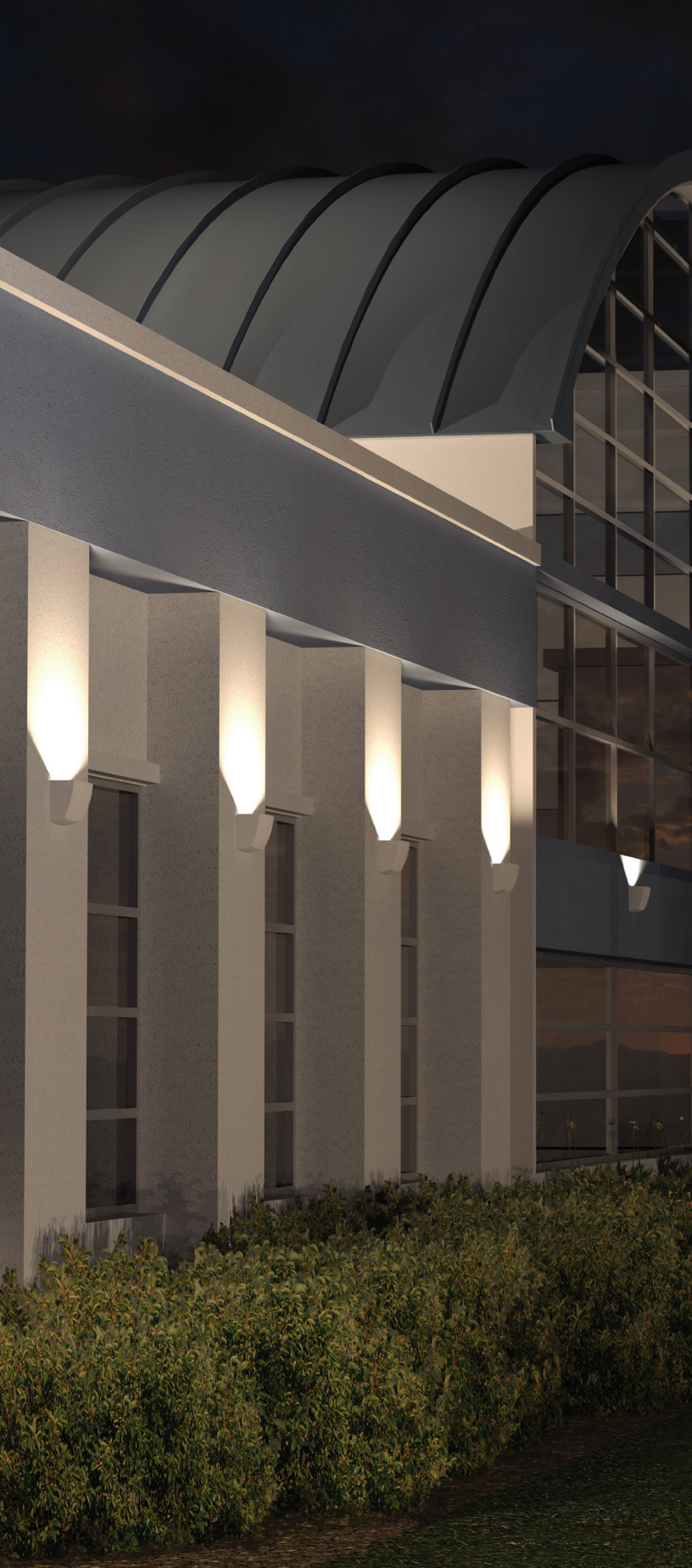


## VWPH – Horizontal Wall Pack



## VWPV – Vertical Wall Pack



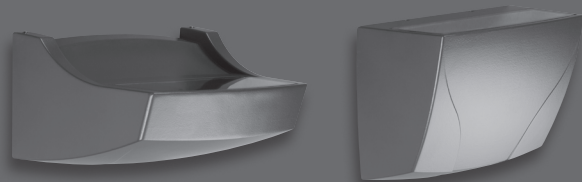


## Uplight | Downlight Applications

Williams Voltaire wallpacks are designed for versatility as well as performance and aesthetics. Two different housing styles – vertical or horizontal – mount easily in both uplight and downlight applications, or in any direction in between, to evenly illuminate canopies, sidewalks, or entryways.

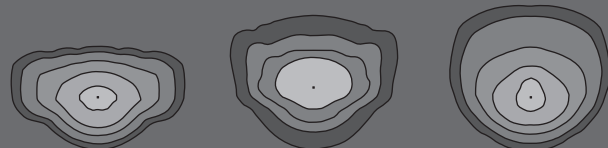
The architectural features incorporated into the housings are visible whether the fixture is mounted at 0 or 180 degrees, the result of purposeful design and attention to detail.

Constructed and tested to perform to wet location and IP65 standards in any wall mount application, the VW Series wallpacks from Williams are a durable, reliable, attractive addition to any exterior lighting project.



## Up or Down Distribution Options

Voltaire wall packs are designed to provide full cutoff lighting primarily for security and perimeter applications. The VWM mini wall packs deliver general distribution intended for mounting heights up to 10'. The VWP wall packs are designed with acrylic refractive precision optics to produce three standard IES distributions at mounting heights of 10'-15'.



Type II (T2)

Type III (T3)

Type IV (T4)

**Type II (T2)** – Illuminates wall and areas closest to the structure including foundation landscaping, entrances, walkways, or facades.

**Type III (T3)** – Security lighting for perimeters, entryways, alleys or walkways near structures. Also useful in lighting canopies or overhangs in uplight applications.

**Type IV (T4)** – Directs light beyond immediate perimeter to include lawns and offset walkways.

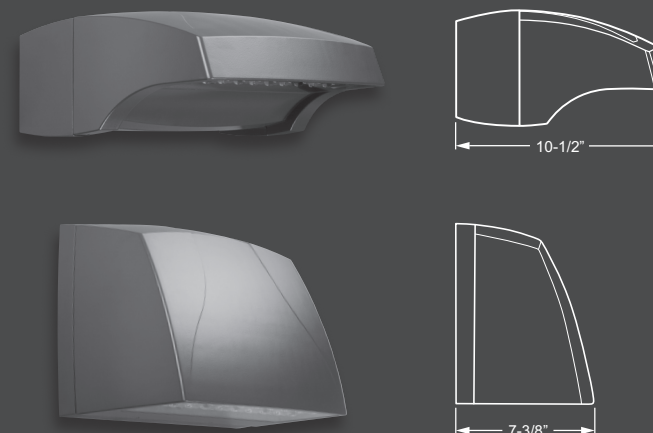
## Emergency Backup | Housing Extension

Keeping aesthetics at the forefront, the VWP series wallpack accommodates an integral emergency battery backup in an extended back box that blends with the architectural form of the fixture. To maintain consistency throughout a project, the optional housing extension without the EM pack can be specified.

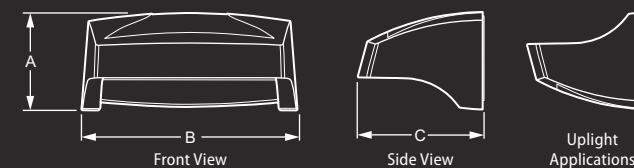
The emergency LED driver works in conjunction with the specified LED driver to convert the fixture into emergency lighting mode. When AC power fails, the emergency driver immediately switches to the emergency mode, operating the LEDs for a minimum of 90 minutes. When AC power is restored, the EM driver automatically returns to the charging mode.

### EM/BSL722LT Specifications:

- Illumination Time: 90 Minutes
- Universal Input Voltage: 120 through 277 VAC, 50/60 Hz
- AC Input Current: 260 mA
- AC Input Power Rating: 37 W
- Output Voltage: 28.0 to 33.0 VDC
- Output Current: 700 mA Nominal
- Output Power: 23.1 W (Maximum)
- Battery Charging Current: 160 mA
- Recharge Time: 24 Hours

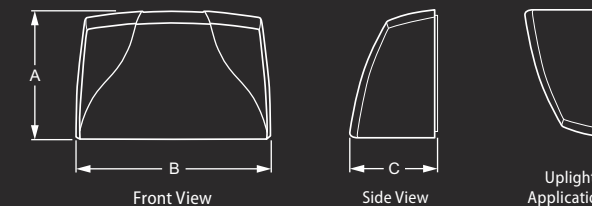


### HORIZONTAL WALL PACK



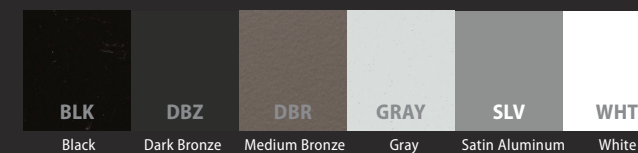
SERIES	A	B	C
VWMH	4-5/8"	10-3/16"	6"
VWPH	5-11/16"	16-3/4"	7-5/8"

### VERTICAL WALL PACK



SERIES	A	B	C
VWMV	5-5/8"	8-7/8"	3-7/8"
VWPV	9-3/8"	14-3/4"	7-3/8"

## Finish Options



The colors shown may vary from actual material. Color chip samples available on request.

SPECIFICATIONS CATALOG

## Specifications

**Housing** – Die-cast aluminum enclosure.

**Thermal Management** – Integral die-cast aluminum heatsink and LED assembly provide passive thermal management. Rated -30°C to 45°C ambient operating temperature (-20°C to 45°C with EM/BSL722LT).

**Optical System** – Clear tempered glass lens standard. Optional Solite® lens available.

VWP: Precision, injection-molded, refractive acrylic lensing produces standard IES distributions.

VWM: General output provides full cutoff.

**LED Source** – ANSI 4000K and 5000K CCT, minimum 70 CRI LEDs.

VWP: Circuit board design incorporates TVS (transient-voltage-suppression) diodes to protect against ESD events.

VWM: Chip on board.

**LED Driver** – 0-10V dimming.

**Electrical** – 120-277, 347, and 480 VAC input range; 50-60Hz; power factor >.90; THD <20% at full load. FCC Class A compliant. 10kA/10kV surge protection standard (VWP only). Quick-disconnect wiring provided.

**Finish** – Super durable polyester powder coat bonded to phosphate-free, multi-stage pretreated metal, meets and exceeds AAMA 2604 specifications for outdoor durability. Available in six standard colors. Custom colors available.

**Mounting** – Surface mounts directly over a 4" maximum outlet box. Must be anchored to adequate structure that can safely support fixture weight.

**Labels** – cCSAus certified as luminaire suitable for wet locations

**Certifications & Qualifications** –

- Calculated L70 lumen maintenance of 54,000 hours per IES TM-21 (50,000 hours for VWM)
- Tested to IES LM-79-08 standards
- Lighting Facts listed.
- DLC qualified products listed at [www.designlights.org](http://www.designlights.org)
- IDA Dark-Sky approved (downlight applications only).
- RoHS compliant.
- IP65 rated.
- BUG classified per IES TM-15-11

**Warranty** – 5-year limited warranty, see [hew.com/warranty](http://hew.com/warranty).

## Ordering Information

EXAMPLE	<b>VWP</b>	<b>H</b>	<b>- LED32/740</b>	<b>- T4</b>	<b>- DBR</b>	<b>- OPTIONS</b>	<b>- EDD*IN</b>	<b>- UNV</b>	
	↓ SERIES	↓ TYPE	↓ LUMEN PACKAGE	↓ CRI & CCT	↓ DISTRIBUTION (VWP ONLY)	↓ FINISH	↓ OPTIONS	↓ DRIVER	↓ VOLTAGE

### SERIES

<b>VWM</b>	Voltaire Mini Architectural Wall Pack
<b>VWP</b>	Voltaire Architectural Wall Pack

### TYPE

<b>H</b>	Horizontal
<b>V</b>	Vertical

### LED PACKAGE

EXAMPLE: LED32/740		
LUMEN PACKAGE	NOMINAL LUMENS	MINIMUM CRI & CCT
<b>VWM</b>		
<b>LED10/</b>	1,000	<b>840</b> = 80 CRI, 4000K
<b>LED17/</b>	1,700	<b>750</b> = 70 CRI, 5000K
<b>VWP</b>		
<b>LED18/</b>	1,800	<b>740</b> = 70 CRI, 4000K
<b>LED32/</b>	3,200	<b>750</b> = 70 CRI, 5000K

### DISTRIBUTION (VWP only)

<b>T2</b>	Type II
<b>T3</b>	Type III
<b>T4</b>	Type IV

### FINISH OPTIONS

<b>BLK</b>	Black (RAL #9004)
<b>DBZ</b>	Dark bronze
<b>DBR</b>	Medium bronze
<b>GRAY</b>	Standard gray
<b>SLV</b>	Satin aluminum (RAL #9006)
<b>WHT</b>	White (RAL #9003)

### OPTIONS

#### VWM OPTIONS

<b>PC</b>	Factory-installed button-style photocell (120V, 208V, or 277V only; must specify voltage)
<b>SDGL</b>	Solite® diffused textured tempered glass lens
<b>SP10</b>	10kA/10kV surge protection

#### VWP OPTIONS

<b>SF</b>	Single fuse (120V, 277V, or 347V only; must specify voltage)
<b>DF</b>	Double fuse (208V, 240V, or 480V only; must specify voltage)
<b>EM/BSL722LT</b>	Emergency LED driver (10 LEDs driven at 700mA), low temperature, includes housing extension (increases fixture depth).
<b>HSGX</b>	Empty housing extension used to match units with EM option
<b>PC</b>	Factory-installed button-style photocell (120V, 208V, or 277V only; must specify voltage)
<b>SDGL</b>	Solite® diffused textured tempered glass lens

### DRIVER

<b>EDD*IN</b>	Inventronics LED dimming driver prewired for 0-10V controls (120V-277V only)
<b>EDD*PH</b>	Philips LED dimming driver prewired for 0-10V controls (VWP, 347V-480V only)

### VOLTAGE

<b>120</b>	120V	<b>UNV</b>	120-277V
<b>208</b>	208V	<b>347</b>	347V (VWP, LED32 only)
<b>240</b>	240V	<b>480</b>	480V (VWP, LED32 only)
<b>277</b>	277V		