

LOW-PROFILE TROFFER

LPT

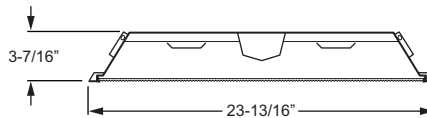
LED

CATALOG #:				TYPE:					
PROJECT:				NOTES:					
EXAMPLE LPT - 2 4 - L67/835 - S AF12095 - OPTIONS - DIM - UNV									
SERIES	NOM. W.	NOM. L.	LUMEN PACKAGE	CRI & CCT	DOOR FRAME	SHIELDING	OPTIONS	DRIVER	VOLTAGE



FEATURES

- ▶ 3-7/16" deep housing installs easily within limited plenum space.
- ▶ Gasketed door frame features offset mitered corners to eliminate light leaks.
- ▶ Cam latches close securely and allow hassle-free maintenance.
- ▶ Reversible door hinges and latches allow access on either side.
- ▶ Deep reinforcement ribs provide added strength.
- ▶ Integral T-bar clips quickly secure fixture to structure.
- ▶ LED technology provides high efficacy and energy efficiency.
- ▶ Rated for 50,000 hours at 85% lumen maintenance (L85).
- ▶ Minimum 82 CRI; 3000K, 3500K, or 4000K CCT.
- ▶ This fixture is proudly made in the USA.



SPECIFICATIONS

Housing – 22-gauge die-formed C.R.S.
Door Frame – 22-gauge C.R.S., offset mitered corners, cam latches, and T-style hinges.
Shielding – Frosted acrylic, pattern #12, .095" thick.
Finish – 92% minimum average reflective white polyester powder coat bonded to phosphate-free, multi-stage pretreated metal. All parts painted after fabrication to facilitate installation, increase efficiency, and inhibit corrosion.
Electrical – High quality mid-power LED boards. L85 at 50,000 hours. 25°C maximum ambient operating temperature.
Mounting – NEMA Type "G" standard. For flange installations use the Drywall Kit (DFK), ordered separately, see Information section.
Labels – cCSAus certified as luminaire suitable for dry or damp locations. DLC qualified products listed at www.designlights.org.
Warranty – 5-year limited warranty, see hewilliams.com/warranty.

ORDERING INFORMATION

SERIES	
LPT	Low-Profile Troffer

NOMINAL WIDTH	
2	2'

NOMINAL LENGTH	
2	2'
4	4'

LED PACKAGE			
NOTE: Nominal lumens are based on AF12095 shielding.			

EXAMPLE: L67/840			
LUMEN PACKAGE	NOMINAL LUMENS	MINIMUM CRI & CCT	AVERAGE SYSTEM WATTAGE
2x2			
L30/	3,000	830 = 82 CRI, 3000K	33
L43/	4,300		50
2x4			
L42/	4,200	840 = 82 CRI, 4000K	39
L67/	6,700		65
L90/	9,000		87

Nominal lumen output based on 3500 CCT. Actual lumens may vary +/- 5%. See specific photometric tests. Additional LED lumen packages available, see options.

DOOR FRAME	
S	White flat steel

SHIELDING	
AF12095	Frosted acrylic, pattern #12, .095" thick
A12125	Clear acrylic, pattern #12, .125" thick (LED pixelation will be visible)
AF12125	Frosted acrylic, pattern #12, .125" thick
A19156	Clear acrylic, pattern #19, .156" thick (LED pixelation will be visible)
AF19156	Frosted acrylic, pattern #19, .156" thick

OPTIONS	
EM/BSL310	Emergency LED driver, nominal 1,100 lumens module output in EM mode (not available with 2'x2' fixtures)
EM/BSL310/BMTD	Back-mounted emergency LED driver, nominal 1,100 lumens module output in EM mode, increases fixture height (required for 2'x2' fixtures). See back for details.
(L__)	Additional lower lumen packages available. Specify in increments of 100 nominal lumens. Option must be specified with next <i>higher</i> lumen package. Example: 8,100 nominal lumens = LPT-24-L90/840-SAF12095-(L81)
F338	6', 3/8" flex, 3-conductor, No. 18 AWG (DRV only)
F348	6', 3/8" flex, 4-conductor, No. 18 AWG (DRV only)
EQCLIPS	Earthquake clips (4 per fixture)

DRIVER	
DRV	Driver prewired for non-dimming applications
DIM	Driver prewired for 0-10V low-voltage dimming applications
SD40	40% step-dimming driver (must specify 120V or 277V)

VOLTAGE	
120	120V
277	277V
UNV	120-277V

PHOTOMETRY – 2x4

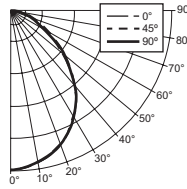
Catalog #: **LPT-24-L67/835-SAF12095-DIM**

IMPORTANT:

Electrostatic sensitive unit. Observe precautions when handling.

TEST REPORT INFORMATION

- ▶ Test Report #: 18560.0
- ▶ Date: 12/18/14
- ▶ Lamp Type: LED
- ▶ **Rated Lumens: 7159**
- ▶ **Watts: 65**
- ▶ **Lumens Per Watt: 110**
- ▶ **CRI: 82**
- ▶ **CCT: 3457K**



CANDLEPOWER DISTRIBUTION

Vertical Angle	Horizontal Angle			Zonal Lumens
	0°	45°	90°	
0°	3265.	3265.	3265.	
5°	3230.	3221.	3226.	307.8
15°	3064.	3062.	3068.	868.4
25°	2747.	2756.	2764.	1274.8
35°	2294.	2290.	2309.	1441.8
45°	1686.	1669.	1648.	1290.0
55°	1080.	1028.	996.	925.3
65°	615.	566.	568.	575.1
75°	317.	302.	342.	336.7
85°	117.	122.	145.	138.7
90°	0.	0.	0.	

LUMEN SUMMARY

Zone	Lumens	% Fixture
0° - 30°	2451.	34.2
0° - 40°	3893.	54.4
0° - 60°	6108.	85.3
0° - 90°	7159.	100.0
Total Luminaire:		
0° - 180°	7159.	100.0

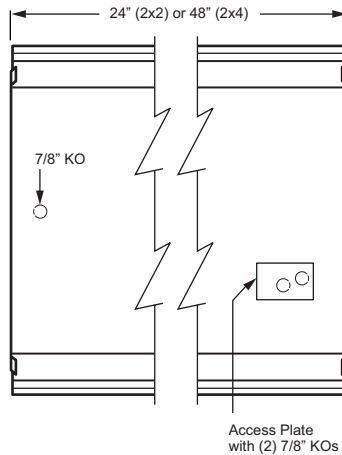
IES Spacing Criteria: End = 1.2
Diagonal = 1.2
Across = 1.2

FIXTURE PERFORMANCE DATA

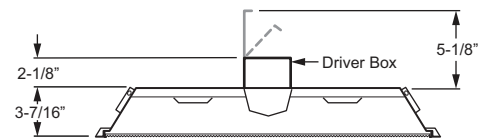
Catalog Number	Lumen Output	Total Power (W)	Luminaire Efficacy	CCT (K)	CRI
2x2 Unit					
LPT-22-L43/835-SAF12095-DIM	4332	50	87	3493	82
2x4 Unit					
LPT-24-L42/830-SAF12095-DIM	4244	39	107	3022	82
LPT-24-L42/835-SAF12095-DIM	4138	39	106	3445	83
LPT-24-L42/840-SAF12095-DIM	4296	38	112	3933	84
LPT-24-L67/835-SAF12095-DIM	7159	65	110	3457	82
LPT-24-L67/840-SAF12095-DIM	6876	66	105	3940	84
LPT-24-L90/840-SAF12095-DIM	8731	82	107	3980	83

FIXTURE DETAILS

BACK VIEW



EM/BSL310/BMTD DETAILS



2x2 configurations will require EM driver to be back mounted. Additional plenum depth is required for installation and servicing. Not available with NEMA Type "F" applications. Access required through adjacent tile in grid system.



DLC qualified products listed at www.designlights.org.

The U.S. Department of Energy's Lighting Facts® Program has verified product performance based on industry-standardized testing. For details, see H.E. Williams LPT series at www.lightingfacts.com.

