

# DL-RS SERIES

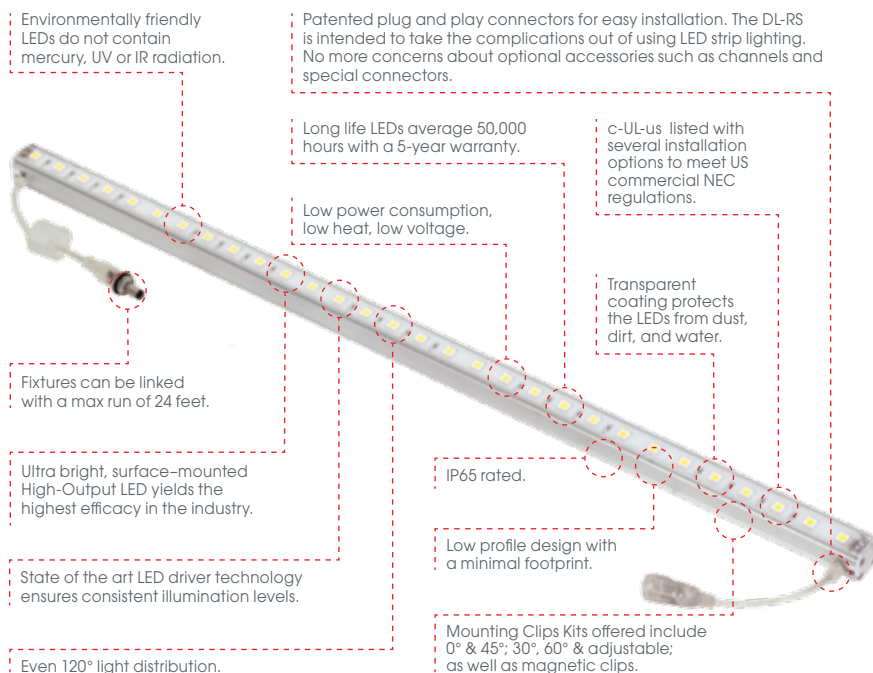
**LED RIGID STRIP**  
FOR WET, DAMP &  
DRY LOCATIONS



  
**JESCO**  
LIGHTING GROUP

# DL-RS RIGID STRIP

Rigid Strip is a dimmable linear LED fixture suitable for wet, damp or dry locations. Each fixture is provided with 2-inch lead wire with waterproof input and output connections. Fixtures can be linked using waterproof connections for runs of up to 24 feet. Also included are two 0°, two 45° mounting clips (4 total), and one outdoor DC output end cap. The outdoor DC end cap is required at the end of each run.



## APPLICATIONS

- Wet and dry location coves and soffits.
- Wet and dry area features and accents.
- Entryways.
- Backlighting of signage or decorative tiles or panels in stores, restaurants, hotels, offices.
- Automotive, RV & marine lighting.
- Bar shelves, wine and liquor displays in restaurants and bars; under countertops for dramatic effects.
- Product displays in showrooms, retail stores and office workstations.
- Museums, galleries, antique stores.
- Store fixture shelving and cashwraps highlighting featured items.
- Point of purchase displays.
- Fluorescent replacement fixtures.
- Integrated into furniture, bedroom headboards, decorative trims for homes, offices, hotels.
- Bookcases, china and glassware cabinets, trophy cases.
- Use of controls for market branding by using light outputs that complement or mimic corporate colors.
- Enhance product displays by changing lighting color and intensity with the use of controls.

<b>DL-RS</b>	LED	120°
<b>LED Rigid Strip</b>		
<b>LED/Ft.:</b> 18	24V DC	3.2 W/Ft <sup>†</sup>
<b>Max Run:</b> 24'	360 Lm/Ft <sup>†</sup>	113 Lm/W <sup>†</sup>
<b>Dims:</b> ½" W x ½" H	IP65	c-UL-us
<b>Housing:</b> Aluminum extrusion		
<b>Dimming:</b> Yes <sup>1</sup>		
<b>Environment:</b> Wet, Damp, Dry <sup>2</sup>		
<b>Includes:</b> (1) DL-RS-MC-1		
(1) DL-PS-OD-EC or DL-PS-OD-RGB-EC		

Model	Length	CCT	Cover <sup>‡</sup>
<b>DL-RS</b>	<b>12 12"</b>	<b>27 2700K</b>	<b>C Opal Cover</b>
	<b>24 23 ¾"</b>	<b>30 3000K</b>	
	<b>36 35 ½"</b>	<b>40 4000K</b>	
	<b>48 47 ½"</b>	<b>60 6000K</b>	
		<b>RGB RGB</b>	
		<b>R Red</b>	
		<b>G Green</b>	
		<b>B Blue</b>	
		<b>Y Yellow</b>	

<sup>1</sup> Dimmable with 0-10V or Low Voltage Magnetic dimmer depending on driver selected.

<sup>2</sup> This product cannot be submersed in water. The outdoor DC end cap (DL-PS-OD-EC or DL-PS-OD-RGB-EC) is required at the end of each run.

<sup>†</sup> Product Lumen Output and Lumens/Watt are based on 6000K color temperature.

<sup>‡</sup> Optional.

Length	CCT	Watt	Lumens
<b>12 12"</b>	<b>27 2600-2800K</b>	<b>3.2W</b>	<b>265</b>
	<b>30 3000-3200K</b>		<b>300</b>
	<b>40 4000-4200K</b>		<b>325</b>
	<b>60 6200-6400K</b>		<b>360</b>
<b>24 23 ¾"</b>	<b>27 2600-2800K</b>	<b>6.4W</b>	<b>530</b>
	<b>30 3000-3200K</b>		<b>600</b>
	<b>40 4000-4200K</b>		<b>650</b>
	<b>60 6200-6400K</b>		<b>720</b>
<b>36 35 ½"</b>	<b>27 2600-2800K</b>	<b>9.6W</b>	<b>795</b>
	<b>30 3000-3200K</b>		<b>900</b>
	<b>40 4000-4200K</b>		<b>975</b>
	<b>60 6200-6400K</b>		<b>1080</b>
<b>48 47 ½"</b>	<b>27 2600-2800K</b>	<b>12.8W</b>	<b>1060</b>
	<b>30 3000-3200K</b>		<b>1200</b>
	<b>40 4000-4200K</b>		<b>1300</b>
	<b>60 6200-6400K</b>		<b>1440</b>
<b>12 12"</b>	<b>RGB RGB</b>	<b>3.8W</b>	<b>148</b>
<b>24 23 ¾"</b>		<b>7.6W</b>	<b>296</b>
<b>36 35 ½"</b>		<b>11.4W</b>	<b>444</b>
<b>48 47 ½"</b>		<b>15.2W</b>	<b>592</b>

Using the opal cover will reduce the lumens by approximately 15 to 20%. For higher lumen output option consult with factory for availability.

## PLUG & PLAY



A. Power Supply: DL-PS-xx/24

B. LED Luminaire: DL-RS-xx-xx

C. End Cap: DL-PS-OD-EC (required for outdoor use)





DL-RS with  
-C opal cover and  
clip-on end caps

DL-RS without  
-C opal cover

## ACCESSORIES



**Opal Cover**  
**DL-RS-C-12**  
Length: 12"  
**DL-RS-C-24**  
Length: 23 7/8"  
**DL-RS-C-36**  
Length: 35 5/8"  
**DL-RS-C-48**  
Length: 47 1/2"  
**DL-RS-C-72**  
Length: 72"

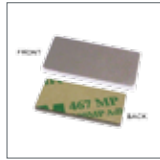
- Includes two clip-on cover end caps.
- 80-85% light transmittance.
- Cover easily slides onto the fixture.
- Covers can provide similar appearance to neon edge lighting applications when multiple fixtures are combined under a longer cover to provide a clean line with imperceptible breaks.



**DL-RS-MC-1**  
**Mounting Clip Kit**  
(included with each fixture)  
(2) 0° clips  
(2) 45° clips



**DL-RS-MC-2**  
**Mounting Clip Kit**  
(2) 30° clips  
(2) 60° clips  
(2) Adjustable clips



**ACC-MT-MAG-01-SET**  
**Magnetic Mounting Clip (Set of 2)**  
Dims: 1" x 1/2"  
Each magnetic mounting clip is backed by double sided tape. The tape-side can be attached to the back of the fixture which then allows the fixture to easily attach to metal shelves or can be used in conjunction with the standard mounting clip provided.

## POWER SUPPLIES

Model	Description
<b>DL-PS-80/24-JB-OD</b>	24V, 80W Outdoor Electronic Hardwire Power Supply in Junction Box Enclosure. UL Class 2
<b>PS-CV-24/96-JB-OD</b>	24V, 96W Outdoor Electronic Hardwire Power Supply in Junction Box Enclosure. UL Class 2
<b>DL-PS-WP24/24</b>	24V, 24W Indoor Electronic Wall Plug Plug & Play Power Supply. UL LPS
<b>DL-PS-24/24</b>	24V, 24W Indoor Electronic Desktop Plug & Play Power Supply. UL LPS
<b>DL-PS-48/24</b>	24V, 48W Indoor Electronic Desktop Plug & Play Power Supply. UL LPS
<b>DL-PS-60/24</b>	24V, 60W Indoor Electronic Desktop Plug & Play Power Supply. UL LPS
<b>DL-PS-100/24</b>	24V, 90W Indoor Electronic Desktop Plug & Play Power Supply. UL LPS
<b>DL-PS-40/24-JB-M</b>	24V, 40W Indoor Dimmable Magnetic Hardwire Power Supply. ETL Class 2
<b>DL-PS-60/24-JB-M</b>	24V, 60W NEMA 3R Dimmable Magnetic Hardwire Power Supply. ETL Class 2
<b>DL-PS-100/24-JB-M</b>	24V, 96W NEMA 3R Dimmable Magnetic Hardwire Power Supply. ETL Class 2

Multiple runs may be installed per power supply as long as the Max Load or Max Run values are not exceeded.

## DIMMERS

Model	Description
<b>LC-DIM100-RF</b>	24V, 10A, Plug & Play Remote control; Step and smooth dimming
<b>LC-DIM100-RF-HW</b>	12/24V, 10A, Hardwire Step and smooth dimming; Remote control
<b>LC-DIM5A-HW</b>	12/24V, 0-10V Dimming Interface. Requires separate 0-10V dimmer switch
<b>DS-DV-TV-WH</b>	0-10V Wall Plate Dimmer Switch; Smooth dimming, used with LC-DIM5A-HW

Electronic power supplies work in tandem with 0-10V dimming controls and interfaces. Magnetic power supplies work in tandem with Low Voltage Magnetic dimming controls.

## OUTDOOR ACCESSORIES



**DL-PS-80/24-JB-OD**  
**Hardwire Power Supply in a Junction Box**  
Input: 120V AC  
Output: 24V DC  
Wattage: 80 W  
UL Listed for dry, damp, or wet location use.  
Integrated dimmer - see spec sheet.



**DL-PS-96/24-JB-OD**  
**Hardwire Power Supply in a Junction Box**  
Input: 120V AC  
Output: 24V DC  
Wattage: 96 W  
UL Listed for dry, damp, or wet location use.



**DL-PS-OD-PT-F**  
**Outdoor DC Output Power Connector**  
**DL-PS-OD-RGB-PT-F**  
**RGB Outdoor DC Output Power Connector**  
Bare Wire To Female Connector  
Length: 8"  
Lock nut provides waterproof connection



**Outdoor DC Power Extension Cable**  
**DL-PS-OD-EXT18**  
Length: 18"  
**DL-PS-OD-EXT48**  
Length: 48"  
**DL-PS-OD-EXT96**  
Length: 96"  
Lock nut provides waterproof connection



**RGB Outdoor DC Power Extension Cable**  
**DL-PS-OD-RGB-EXT18**  
Length: 18"  
**DL-PS-OD-RGB-EXT48**  
Length: 48"  
**DL-PS-OD-RGB-EXT96**  
Length: 96"  
Lock nut provides waterproof connection



**DL-PS-OD-EC**  
**End Cap for Outdoor DC Output Power Connector**  
**DL-PS-OD-RGB-EC**  
**RGB End Cap for Outdoor DC Output Power Connector**  
Must cap the end of each run.  
(1) Included with fixture.



**DL-PS-OD-2Y**  
**Outdoor DC 2-Way Power Splitter**  
**DL-PS-OD-RGB-2Y**  
**RGB Outdoor DC 2-Way Power Splitter**  
Length: 13"  
Length of Split Lead: 6"  
Lock nut provides waterproof connection  
Requires DL-PS-OD-EC or DL-PS-OD-RGB-EC on open ends.



**DL-PS-OD-3Y**  
**Outdoor DC 3-Way Power Splitter**  
**DL-PS-OD-RGB-3Y**  
**RGB Outdoor DC 3-Way Power Splitter**  
Length: 13"  
Length of Split Lead: 6"  
Lock nut provides waterproof connection  
Requires DL-PS-OD-EC or DL-PS-OD-RGB-EC on open ends.



**DL-PS-OD-PT-M**  
**Outdoor DC Input Power Connector**  
**Bare Wire To Male Connector**  
**DL-PS-OD-RGB-PT-M**  
**RGB Outdoor DC Input Power Connector**  
**Bare Wire To Male Connector**  
Length: 8"  
For Special Applications Only.

## RGB & DMX CONTROLLERS

Model #	Description
<b>LC-180-RF</b>	Simple RGB Controller
<b>LC-200-INT</b>	DMX Interface
<b>LC-PC-100</b>	DMX Controller
<b>LC-PC-500</b>	Advanced DMX Controller
<b>LC-200-RPT</b>	Power Repeater
<b>DL-PS-WP/USB-MN</b>	LC-PC-100 Power Supply



For more details and product  
specifications please visit  
[JESCOLIGHTING.COM](http://JESCOLIGHTING.COM)



**NEW YORK  
CORPORATE OFFICE**

6625 Traffic Avenue  
Glendale NY 11385

TEL 718 366 3211  
TEL 800 527 7796  
FAX 718 366 3646  
FAX 855 265 5768

**LOS ANGELES**

219 South 6th Avenue  
City Of Industry CA 91746

TEL 626 333 3661  
TEL 855 654 0110  
FAX 626 333 2955

[JESCOLIGHTING.COM](http://JESCOLIGHTING.COM)

© 2012 JESCO LIGHTING

LCAT-DLRS2