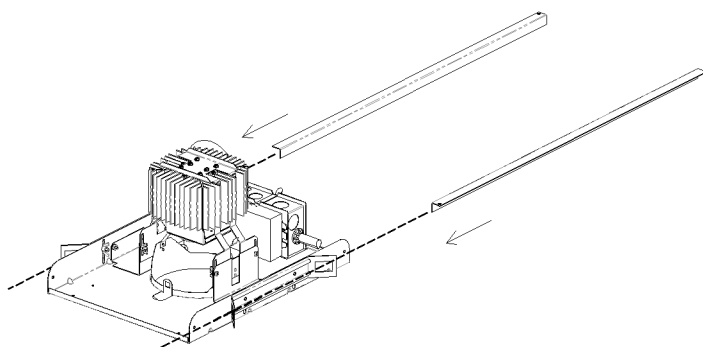


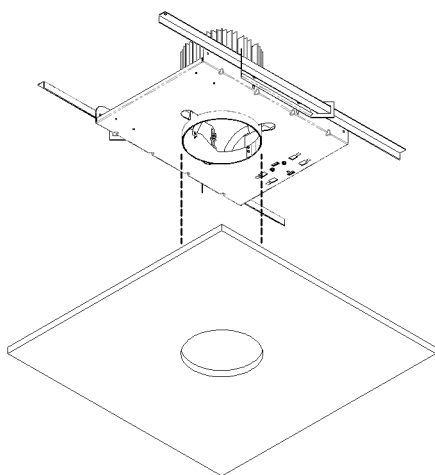
WARNING:

- This product must be installed in accordance with the applicable installation code by a person familiar with the construction and operation of the product and the hazards involved.
- Make sure all electrical power is turned off while installing the fixture.
- This luminaire must be adequately grounded for protection against shock hazards and to assure proper operation.
- External parts of luminaire may develop high operating temperature. To avoid pain or injury, do not touch external parts of luminaire when it is in operation.
- Disconnect power before servicing.
- Always use correct lamp type and wattage.
- LEDs are ESD (Electro Static Discharge) sensitive devices that can be easily damaged if the proper ESD mitigating steps are not taken.
- LEDs are very sensitive to mechanical damage. Caution must be taken to avoid damage to the LEDs.
- ESD or mechanical damage voids all warranties.

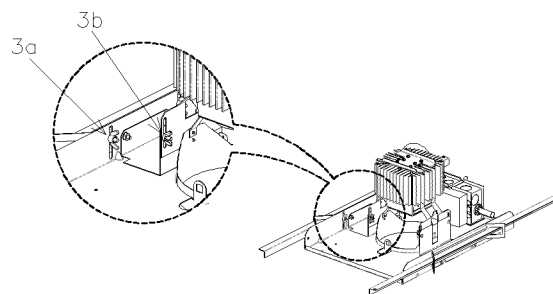
STEP 1: Slide bar hangers (provided) into adjustable brackets on either side of pan.



STEP 2: Cut a hole in the ceiling material at the desired location. (Refer to the fixture spec sheet for recommended hole dimensions.) Manage the fixture over the hole location and secure the fixture pan to ceiling supports or other suitable structure per applicable local codes. (L Series shown.)

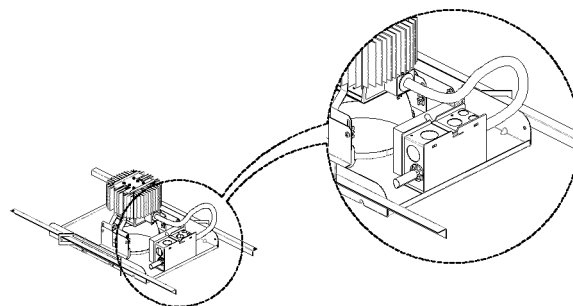


STEP 3: A Adjust height of pan brackets so that the bottom of the pan throat will be level with the room side of the finished ceiling structure. Lock the bracket height with the (4) wing nuts provided.



STEP 3: B (L and LSQ Series only) For ceiling materials thicker than 5/8", extend inner throat/throat tab down to be flush with room side of finished ceiling material. (See product spec sheet for maximum allowable ceiling material thickness.) Lock the throat/throat tab position with the (4) wing nuts provided. L Series shown.)

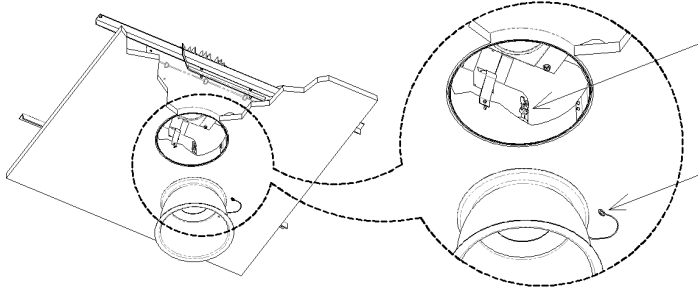
STEP 4: Make electrical connections to the building power in the junction box located on the fixture pan, per applicable local codes. Replace the junction box access cover when finished.



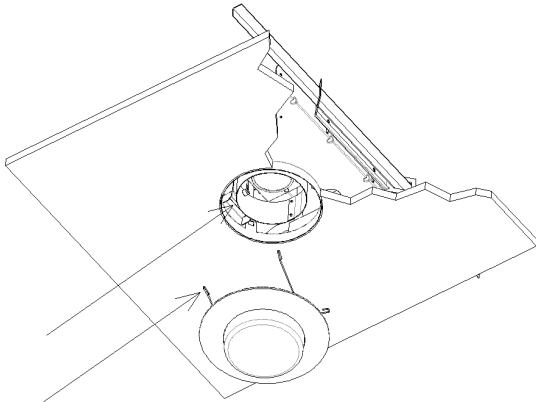
L/LSQ/LSL LED SERIES INSTALLATION INSTRUCTIONS

TRIM INSTALLATION

L/LSQ Series: Locate the safety cable attached to the reflector trim. Remove one throat wing nut and attach safety cable eyelet to exposed stud, and secure by replacing the wing nut. Slide the reflector trim into the aperture until the internal spring clips pull the trim flange tight to the ceiling surface. (If trim does not hug tight to the ceiling, re-adjust the pan brackets and/or internal throat to ensure that it is suitably above the ceiling material – see Step 3.)



LSL Series: Locate the (2) torsion springs on the sides of the trim. Compress torsion spring legs and manage into the slots on either side of the fixture pan aperture. Lift trim until the torsion springs pull the trim flange tight to the ceiling surface. (If trim does not hug tight to the ceiling, re-adjust the pan brackets to ensure that the pan throat is suitably above the ceiling material – see Step 3.)

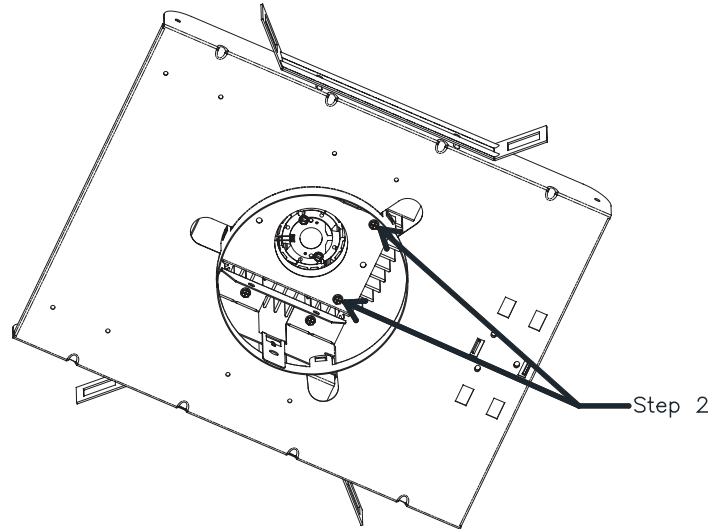


LED MODULE REPLACEMENT

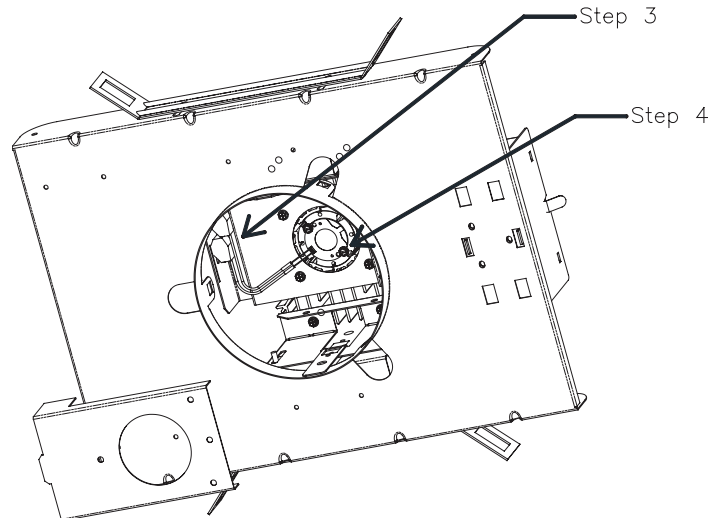
(L Series shown)

STEP 1: Disconnect power to fixture prior to maintenance. Remove fixture trim.

STEP 2: Remove and retain the (2) screws securing the LED wiring cover. Manage the LED wiring cover down through the pan aperture.



STEP 3: Undo the wire splices at the wirenuts provided.



STEP 4: Remove and retain the screws securing the LED module to the heat sink. Carefully pry the LED module off the heat sink and remove the LED module and power cable. Clean any traces of the used thermal interface material from the heat sink surface. Apply new thermal pad to new LED module/power cable.

STEP 5: Follow steps 3-4 in reverse to mount the new LED module to the fixture using the existing screws. (Be sure that the new LED module and thermal material are snug against the heat sink.)

STEP 6: Replace the LED wiring cover using the existing screws and replace fixture trim.