

NARROW LOW-PROFILE WRAP

17

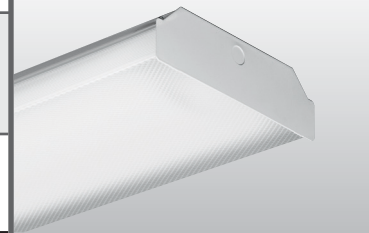
LED

CATALOG #: _____ TYPE: _____

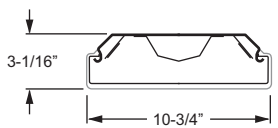
PROJECT: _____ NOTES: _____

EXAMPLE → **17 - 4 - L55/835 - AF - OPTIONS - DRV - UNV**

SERIES NOMINAL LENGTH LUMEN PACKAGE CRI & CCT SHIELDING OPTIONS DRIVER VOLTAGE



CROSS SECTION



ORDERING INFORMATION

SERIES
17 Narrow Low-Profile Wrap

NOMINAL LENGTH

2	2'
4	4'
8	8'

LED PACKAGE

EXAMPLE: L55/835			AVERAGE SYSTEM WATTAGE
LUMEN PACKAGE	NOMINAL LUMENS	MINIMUM CRI & CCT	
2' UNIT			31
L27	2,700	830 = 82 CRI, 3000K 835 = 82 CRI, 3500K 840 = 82 CRI, 4000K	
4' UNIT			
L55	5,500		
8' UNIT			53
L110	11,000	113	

Nominal lumen output based on 3500 CCT. Actual lumens may vary +/-5%. See specific photometric tests. Additional LED lumen packages available, see options.

SHIELDING
AF Frosted prismatic acrylic diffuser

OPTIONS
 See Information section for mounting accessories.
EM/10W 10-watt emergency driver (120V-277V only; not available on 2' unit)

DRIVER
 Additional dimming drivers available, [see Technical Info.](#)
DRV Driver prewired for non-dimming applications
DIM Driver prewired for 0-10V low voltage dimming applications

VOLTAGE

120	120V
277	277V
UNV	120-277V

FEATURES

- ▶ Low-profile wrap-around provides uniform downward light distribution and subtle side illumination.
- ▶ Shallow depth provides sleek, low-profile appearance.
- ▶ Diffuser is secured continuously along luminaire sides.
- ▶ Mounts easily as a single fixture or in continuous row installations.
- ▶ Wireway is accessible without the use of tools.
- ▶ LED technology provides high efficacy and energy efficiency.
- ▶ Rated >50,000 hours at 70% lumen maintenance (L70).
- ▶ Minimum 82 CRI; 3000K, 3500K, or 4000K CCT.
- ▶ This fixture is proudly made in the USA.



SPECIFICATIONS

Housing – 20-gauge die-formed C.R.S. End plates constructed of 19-gauge die-formed C.R.S.

Shielding – Frosted prismatic acrylic diffuser with 15% DR additive, .100" nominal thickness. Prismatic bottom/continuous wrap sides.

Finish – 92% minimum average reflective white polyester powder coat bonded to phosphate-free, multi-stage pretreated metal. All parts painted after fabrication to facilitate installation, increase efficiency, and inhibit corrosion.

Electrical – High quality mid-power LED boards. L70 >50,000 hours.

Mounting – Surface or suspended.

Labels – cCSAus certified as luminaire suitable for dry or damp locations.

Warranty – 5-year limited fixture warranty, see www.hew.com/warranty.

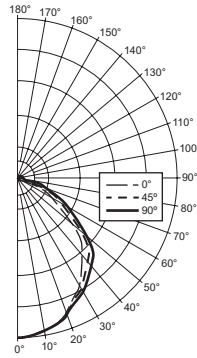
IMPORTANT:

Electrostatic sensitive unit. Observe precautions when handling.

PHOTOMETRY

TEST REPORT INFORMATION

- ▶ Test Report #: 19282.0
- ▶ Date: 03/23/16
- ▶ Lamp Type: LED
- ▶ **Rated Lumens: 5450**
- ▶ **Watts: 53.0**
- ▶ **Lumens Per Watt: 102.8**
- ▶ **CRI: 85.3**
- ▶ **CCT: 3538K**



CANDLEPOWER DISTRIBUTION

Vertical Angle	Horizontal Angle			Zonal Lumens
	0°	45°	90°	
0°	1952.	1952.	1952.	
5°	1931.	1931.	1932.	184.3
15°	1847.	1850.	1854.	524.5
25°	1639.	1658.	1681.	767.8
35°	1392.	1451.	1508.	911.4
45°	1136.	1262.	1339.	968.0
55°	749.	881.	955.	777.9
65°	452.	558.	626.	545.4
75°	209.	290.	360.	304.2
85°	62.	136.	210.	150.8
90°	6.	69.	125.	
95°	0.	65.	113.	66.7
105°	3.	61.	88.	56.5
115°	8.	61.	88.	54.3
125°	15.	55.	79.	46.0
135°	19.	48.	61.	35.0
145°	26.	46.	56.	27.7
155°	25.	38.	45.	17.3
165°	27.	33.	36.	9.3
175°	30.	31.	31.	2.9
180°	27.	27.	27.	

LUMEN SUMMARY

Zone	Lumens	% Fixture
0° - 30°	1477.	27.1
0° - 40°	2388.	43.8
0° - 60°	4134.	75.8
0° - 90°	5134.	94.2
90° - 120°	178.	3.3
90° - 130°	224.	4.1
90° - 150°	286.	5.3
90° - 180°	316.	5.8
Total Luminaire:		
0° - 180°	5450.	100.0

IES Spacing Criteria: End = 1.2
Diagonal = 1.2
Across = 1.2

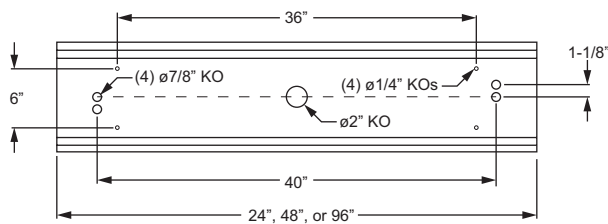
FIXTURE PERFORMANCE DATA

Catalog Number	Nominal Lumen Output	Total Power (W)	Luminaire Efficacy (lm/W)	CCT (K)	Minimum CRI
2' UNIT					
17-2-L27/830	2651	31.8	83.5	3000	82
17-2-L27/835	2733	31.8	86.1	3500	82
17-2-L27/840	2826	31.8	89.0	4000	82
4' UNIT					
17-4-L55/830	5359	56.9	94.2	3000	82
17-4-L55/835	5525	56.9	97.1	3500	82
17-4-L55/840	5714	56.9	100.4	4000	82
8' UNIT					
17-8-L110/830	10719	113.8	94.2	3000	82
17-8-L110/835	11050	113.8	97.1	3500	82
17-8-L110/840	11428	113.8	100.4	4000	82

- Photometrics tested in accordance with IESNA LM-79. Results shown are based on 25°C ambient temperature.
- Wattage shown is average for 120V through 277V input.

FIXTURE DETAILS

BACK VIEW



Note: Midsection punching for 4' and 8' units only. 8' unit consists of duplicate 4' unit punching.