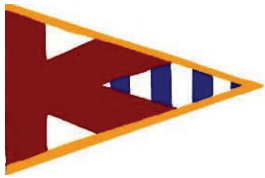


The Pilot

Kalamazoo Sail & Power Squadron



Inside this Issue

Pilot Survives Crash	1
Interesting Water Facts	1
Outreach	2
July Picnic & Vessel Safety Checks	2
Events, Meetings and other Activities	2
Public, Advanced & Elective Courses	2
Merit Marks Earned	3
Summer Birthdays	3
2009 KSPS Bridge Officers	4
Welcome New Members	4
Safety Corner— Kidde Extinguisher Recall	4

KSPS member survives plane crash

With excerpts by Paula M. Davis - Kalamazoo Gazette | Staff Writer: Sebastian Montes and Photographer: Laurie DeWitt - Gaithersburg's Gazette | WMMT-CBS Channel 3 News | WJZ 13 Gaithersburg and a first hand account by the pilot, KSPS member Verle Wiita.

A member of the Kalamazoo Sail and Power Squadron, Verle Wiita walked away unscathed after making an emergency landing in his single-engine four-seater plane on a Gaithersburg Maryland neighborhood street Sunday afternoon March 15, 2009. He was alone in the plane and on his way back to Kalamazoo after visiting his son when the problem began.

Just as with any trip by boat or plane, Verle had checked weather via 1-800-WX-Brief before deciding to travel and file a flight plan. While the weather was less than ideal, low ceiling and light constant rain, he would be making the 2.5 hour trip from Maryland to Kalamazoo using Instrument Flight Rules (IRF). After completing inspection, Verle departed. Upon liftoff and initial climb-out, while first entering the clouds at approximately 700 to 1000 feet, the passenger-side door popped open, causing wind, rain and increased cockpit noise. It is not possible to close and latch the door from the pilot's seat. The distraction from the open door caused him to divert his eyes from the instruments. Anyone who has flown through clouds knows that can quickly cause disorientation. He became aware of a descending spiral turn to the left (called a Graveyard spiral similar to the crash of John F. Kennedy Jr.) He attempted to return to the original flight plan course and decided that he was going to have to land, as the door was open about 2 to 3 inches. He turned toward the airport, just below the cloud deck, in an attempt to use a visual approach. He had already slowed the plane to 90 knots. Next he felt the plane enter a stall, and what felt like the beginning of a spin. Story continues on page 3



Interesting Water Facts

The Great Lakes contain the largest supply of freshwater in the world, holding about 18% of the world's total freshwater and about 90% of the United States' total freshwater. The Lakes provide drinking water to 40 million U.S. and Canadian citizens. Genesee County (largest city is Flint) wants to build a pipeline to withdraw 85 million gallons of water a day from Lake Huron. They currently get their water from Lake Huron via Detroit. Combined, the lakes cover an area of over 94,000 square miles.



KSPS, D-9 & USPS Activities, Events and Meetings

Tues 9 June 2009 Time: 1830 - 2100 KSPS Executive Committee Meeting Brewsters (269) 344-0600 5135 Portage Rd, Kalamazoo MI East side of road, 1st light South of I-94 near Kalamazoo Airport	19 – 21 June Westside Predicted Log Contest Hosted by Grand Rapids GRS&PS Grand Haven Marina See article in May Pilot for details	Sat 25 July Time: 1030 - 1700 KSPS & South Bend host PICNIC (noon–3) & Vessel Safety Check Black River Yacht Club South Haven MI
Sat 1 August 2009 Coast Guard Festival and Parade Grand Haven, Michigan	8-13 Sept USPS Governing Board Kansas City, MO	23-25 Oct D9 Fall Conference Sterling Heights Host: Mt Clemens

Outreach through Vessel Safety Checks



Get your Vessel Safety Check at the July KSPS/SBPS Picnic in South Haven.

When: Saturday 25 July

Where: South Haven MI

The VSC Program helps to achieve voluntary compliance with federal and state recreational boating safety laws, particularly with regard to the installation and use of safety equipment while raising boater awareness about safety and environmental issues. Vessel Examiner (VE) discussions with recreational boaters are designed to motivate maintaining and operating their boats in a safe manner, taking boating safety courses to increase their knowledge and skills in boating, and promoting safe boating practices. It may also provide a way to have boaters become aware of KSPS and recruit new members.

July Picnic and VSC day

We will be conducting Vessel Safety Checks the Saturday July 25 at Black River Yacht Club in South Haven.

Safety Checks will be performed from 1000 to 1700

If you are interested in having your boat checked, please contact

Bob Boyce at: (H)) 269 979-1199 Cell: 269-967-7919 or

Dan Livingston at: (H) 269 781-2328 (B) 517 796-8540

Email: autodan@yahoo.com

Watch for a postcard with details. Most likely the Picnic will run from about 11:30 to 2:30; while the Vessel Safety Checks will start earlier and run up to 5 pm.

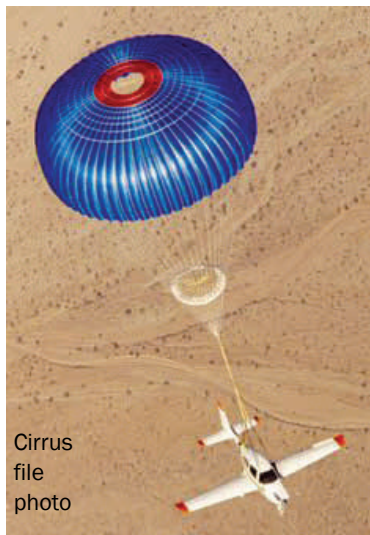
If you would like to help with planning, set-up, serving, BBQ-ing, or clean-up, please give Karen Strand a call (269) 964-6690 or email at: karenstrand@sbcglobal.net



Public Courses, Advanced Grade Courses & Electives

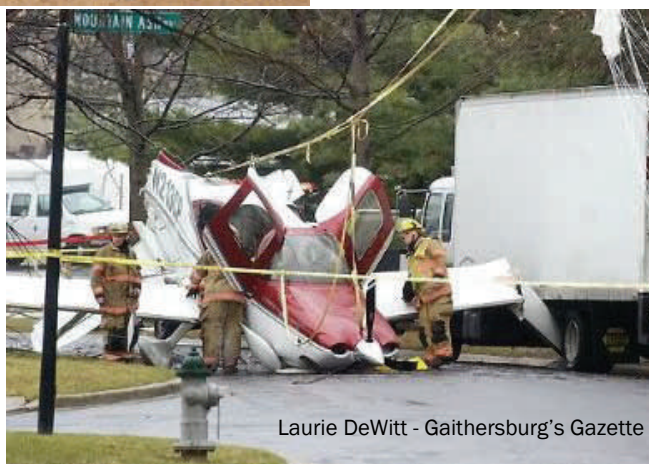
Course	Start Date	Contact Person	Telephone	e-mail address
America's Boating Course: Battle Creek	Winter 2010	Nils Strand	269-964-6690	nils.strand@gsa.gov
America's Boating Course: Kalamazoo	Fall 2009	Wally Corder	269-321-0751	wccorder@hotmail.com
DNR Course (age 12–16): Kalamazoo	Fall 2009	Lois Whitmore	269-345-4521	lwh@core.com
Intro. To Charting: Battle Creek	Spring 2010	Nils Strand	269-964-6690	nils.strand@gsa.gov
Seamanship	Late Fall 2009	Karen Strand	269- 964-6690	karenstrand@sbcglobal.net
Piloting	TBD: Fall 2009	Bill Ditty	269-323-3143	cgdiver@juno.com
Advanced Piloting	TBD	Jerry Hendrickson	269-353-7243	jlh10acrewoods@charter.net
Junior Navigation	TBD	Robert Landeros	269-501-2757	robert.landeros@sbcglobal.net
Navigation	TBD	Robert Landeros	269-501-2757	robert.landeros@sbcglobal.net
Cruise Planning	March 2010	Karen Strand	269-964-6690	karenstrand@sbcglobal.net
Engine Maintenance	Fall 2009 (Wed)	Dan Livingston	269-781-2328	autodan@yahoo.com
Instructor Development	TBD	Lois Whitmore	269-345-4521	lwh@core.com
Marine Electronics	Fall 2010	Harold Hladky	269-969-0815	harold.hladky@wmich.edu
Operations Training	TBD	Phyllis Buskirk	269-375-2586	andiamo91@cs.com
Sail & Advanced Sail	Fall 2010	George Tyler, Jr.	269-671-4560	gtn8kjd@tds.net
Weather	2011	H. Hladky & G. Tyler	269-375-2586	Harold or George

KSPS member survives plane crash



Cirrus file photo

Continued from page 1
 Due to the low altitude, he felt it imperative to immediately pull the CAPS (parachute). It seemed like only 15 to 20 seconds to touch down.
 The plane hit nose first with a sudden but not uncomfortable stop. The wing tip was lodged under a parked truck, with fuel spilling from it. He turned off the ignition and the electrical power and exited the aircraft with no injuries.
 Verle returned to Kalamazoo the next day, saying "I'm glad to be home, and grateful I didn't land on anything but the street".



Laurie DeWitt - Gaithersburg's Gazette

It made the local and national news. According to reporter, Sebastian Montes, "The 2,300-pound Cirrus SR22 veered west over Flower Hill, deployed its emergency parachute and descended onto Mallory Place, narrowly missing traffic on Snouffer School Road and dozens of homes in the Carriage Walk townhouse section of Flower Hill".
 Verle believes emergency planning, training and practice help determine what you will do in a crisis. During the actual emergency often several events all happen at once making it difficult to focus on any one thing. Planning, in advance, what you will do when faced with a crisis, may save your life. Verle said that he has been flying for five years, and in this potentially perilous situation, his training kicked in.

He'd read about other pilots who did not deploy their chutes and none survived the crash. Verle said that he has no qualms about piloting again.

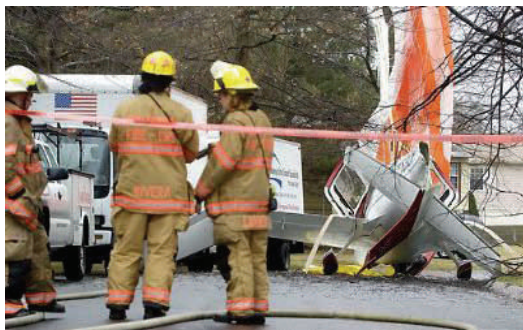


Photo: Laurie DeWitt - Gaithersburg's Gazette

Merit Marks

Merit Marks are earned for contributing time, knowledge and skills to your squadron. This might involve teaching a class, helping organize and carryout an event, coordinating an activity, being a greeter at meetings to make new members feel welcome, serving as a bridge or executive officer or chairperson and carrying out the duties of that position. You only earn one merit mark per year whether you volunteered 20 hours or 1,000. National USPS makes the final approval.

KSPS members earning a merit mark in 2008 are:

- | | |
|-------------------------|----------------------|
| Bleyer, Gary W. | Landeros, Robert |
| Bleyer, Lyndell R. | Levene, J. Scott |
| Buskirk, Phyllis A. A. | Levene, Robyn D. M. |
| Chappell, Daniel E. | Livingston, Susan L. |
| Chappell, Jane | Mills, W. Joseph |
| Corder, Wally | Seng, Dan L. |
| Crespo, Eutiquio | Seng, Linda |
| Dorais, Judy A. | Soule, Maris A. |
| Douglass, Glen H. | Soule, William L. |
| Douglass, Greeta G. | Strand, Karen S. |
| Gerpheide, George D. | Strand, Kari Kristin |
| Hansen, Chris Jay | Strand, Nils K. |
| Hansen, Diane R. | Todd, Roger D. |
| Hendrickson, Jerry Lynn | Tyler Jr., George L. |
| Hladky, Gail | Whitmore, Lois M. |
| Hladky, Harold | |

Next Meeting - Tues. 9 June

Kalamazoo Sail & Power Squadron
 Executive Meeting

Social 6:30 pm, mtg at 7

Brewster's

5135 Portage Rd, Kalamazoo MI
 East side of road, 1st light South of I-94
 north of the Kalamazoo Airport



Birthdays

JUNE

- June 16
Bruce J. Dorais
- June 19
Maris A. Soule
- June 20
Susan Y. Norrod
- June 24
James C. Henning
- June 25
Diana W. Goes
- June 26
Jane Chappell
- June 28
Phil Livingston



JULY

- July 6
George L. Tyler
- July 7
Chris J. Hansen
- July 19
Phyllis A. R. Buskirk
- July 29
Pamela J. Wright

AUGUST

- Aug 4
Joan Gustafson
- Ross T. Griffith
- Aug 6
William T. Ditty
- Aug 10
Wally Corder
- Aug 13
Lois M. Whitmore

The 2009 KSPS Bridge Officers

Commander	Lt/C William Soule, P	269-544-0518 (home)	souleb@aol.com
Executive Officer	Lt/C Daniel L. Livingston, S	269-781-2328 (home)	autodan@yahoo.com
Educational Officer	Lt/C Wally Corder, S	269-321-0751 (home)	wccorder@hotmail.com
Administrative Officer	Lt/C Roger Todd, P	269-945-5211 (home)	rogettodd@core.com
Treasurer	P/C Nils Strand, AP	269-964-6690 (home)	nils.strand@gsa.gov
Secretary	Lt/C Lyndell Bleyer, S	269-731-5601 (home)	lyn.bleyer@wmich.edu

Welcome New Members

Ron and Joanie Gustafson of Kalamazoo

Dawn and Phillip Livingston of Marshall

Reinstated membership after a brief absence:

Scott and Janice Pauley of East Leroy



Ron and Joanie joined after taking Wally Corder's Boat Smart class.

Dawn and Phil joined after taking Nil's Strand's America's Boating Course.

PDF Size Matters



Children should always wear a PFD when they are in, on and around water, no matter how shallow the water. It is crucial that the PFD fit properly. Do not be tempted to by one that the

child will grow into. A loose PFD can allow a child to slip below the surface of the water while still trapped inside the PFD. To check for a good fit, lift the child by the shoulders of the PFD. If the PFD fits right, the child's chin and ears will not slip through.

Future Newsletters

Save KSPS Money

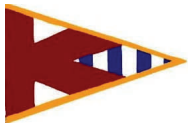
If you are receiving the Pilot by regular mail, help us save postage and printing by sending your email to Lyn at: Bleyer@wmich.edu.

Submit an Article

Please submit Pilot articles by the 2nd Tuesday of the month for consideration in next issue.

Spot an error

or have information that needs updating? Please send corrections to Lyn Bleyer at Bleyer@wmich.edu or mail to the return address below fold.



Kalamazoo Sail & Power Squadron
a unit of the United States Power Squadrons®

Lyndell Bleyer, Editor
6553 N 37th St
Richland MI 49083

pilot.editor@ksp-s-usps.org

Boating is fun... We'll show you how!

Check out the KSPS website,
many changes were made.

<http://www.ksp-s-usps.org>